



REPUBLIC OF TURKEY,
MINISTRY OF FAMILY AND
SOCIAL POLICIES

TURKISH EXPERIENCE FOR POVERTY ALLEVIATION AND ENHANCING HUMAN CAPITAL

Orhan BİLGE- Social Policy Expert

27.06.2013

PRESENTATION PLAN

- 1. ORGANIZATIONAL STRUCTURE**
- 2. SOCIAL EXPENDITURES AND HUMAN DEVELOPMENT**
- 3. SOCIAL ASSISTANCE PROGRAMS & PROJECT SUPPORTS**
- 4. ESTABLISHING SOCIAL ASSISTANCE-EMPLOYMENT RELATION**
- 5. SOCIAL ASSISTANCE INFORMATION SYSTEM (SAIS)**
- 6. INTEGRATED SOCIAL ASSISTANCE SERVICES (ISAS) INFORMATION SYSTEM**
- 7. VISION OF 2023**
- 8. RECOMMENDATIONS**

Organizational Structure

A) RT Ministry of Family and Social Policy

B) Fund Board

C) General Directorate of Social Assurances

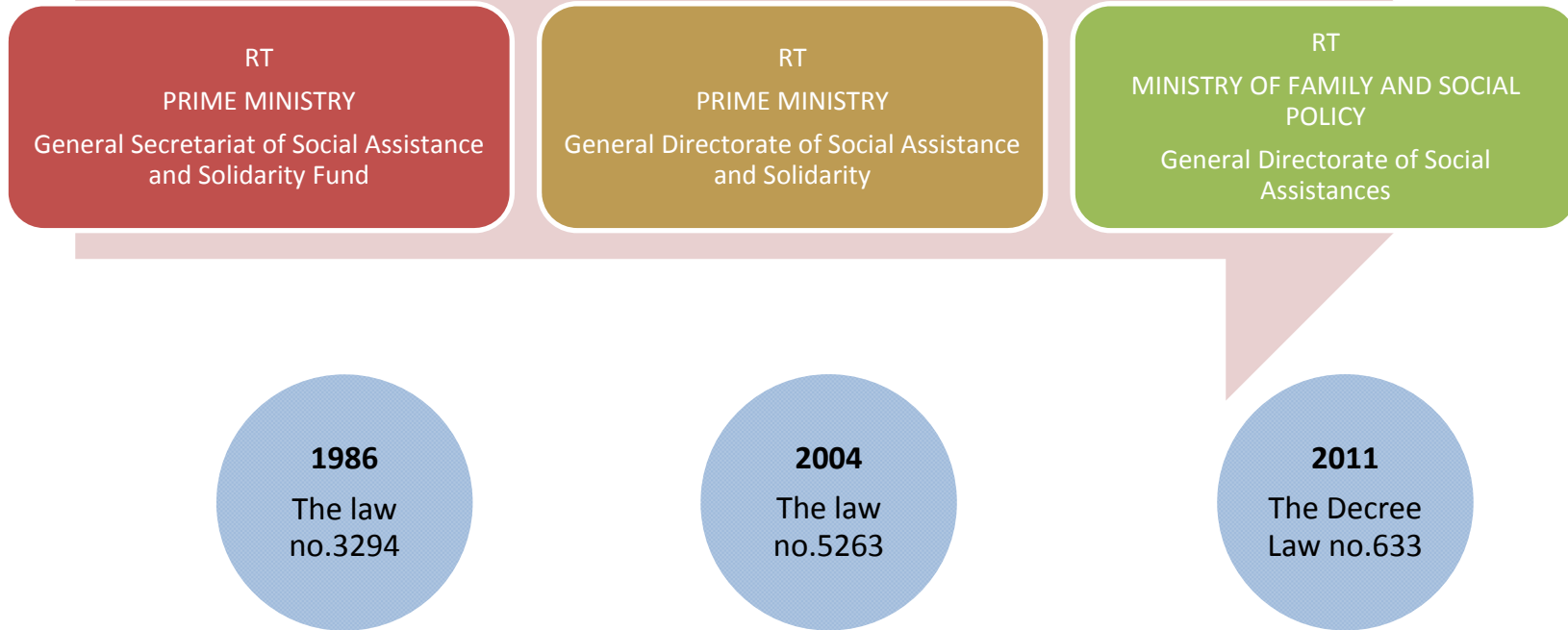
D) Social Assistance and Solidarity Foundations (973)

B) FUND BOARD

The decision board of Social Assistance and Solidarity Fund is the Fund Board.

- *Ministry of Family and Social Policy (Head)*
- *Undersecretary of Prime Ministry,*
- *Undersecretary of Ministry of Interior,*
- *Undersecretary of Ministry of Health,*
- *Undersecretary of Ministry of Finance,*
- *Undersecretary of Ministry of Family and Social Policy,*
- *General Director of Foundations*
- *General Director of Social Assistances*

C) General Directorate of Social Assurances





T.C.
AİLE VE
SOSYAL POLİTİKALAR
BAKANLIĞI

C) DUTIES OF GDSA

To collect resources of Social Assistance and Solidarity Fund

To Develop Strategies in the field of Poverty Alleviation and Social Assistance

To Diminish Poverty and the Effects of Poverty by means of Social Assistance Programs

To Create Objective Beneficiary Determination Criteria and Central Social Assistance Database

To Carry out All Social Assistance Programs provided by Public Resources and To Make General Health Insurance Income Test

D) Social Assistance and Solidarity Foundations

- **Founded in every province and sub-provinces (973)**
- **Decision body is the 'Board of Trustees'.**
- **The head of the Board of Trustees is the administrative chief.**
- **Provide cash and in-kind assistances in accordance with the aim of the law.**
- **Serve as a bridge between the State and the poor citizens.**

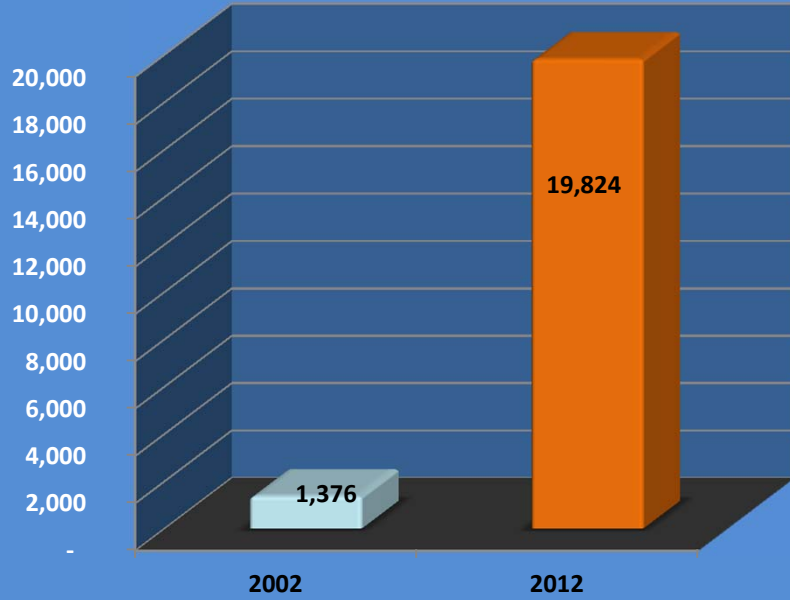
STRUCTURE OF THE BOARD OF TRUSTEES

<i>PROVINCES</i>	<i>SUB-PROVINCES</i>
Governor (Head of Foundation)	District Governor (Head of Foundation)
Mayor	Mayor
Provincial Director of Finance	Sub-provincial Director of Finance
Provincial Director of Education	Sub-Provincial Director of Education
Provincial Director of Health	Sub-provincial Chief of Health
Provincial Director of Agriculture	Sub-provincial Director of Agriculture
Provincial Director of Family and Social Policy	District Mufti
Provincial Mufti	Village Mukhtar
Village Mukhtar	Neighbourhood Mukhtar
Neighbourhood Mukhtar	Representatives of NGOs
Representatives of NGOs	Charitable Persons
Charitable Persons	

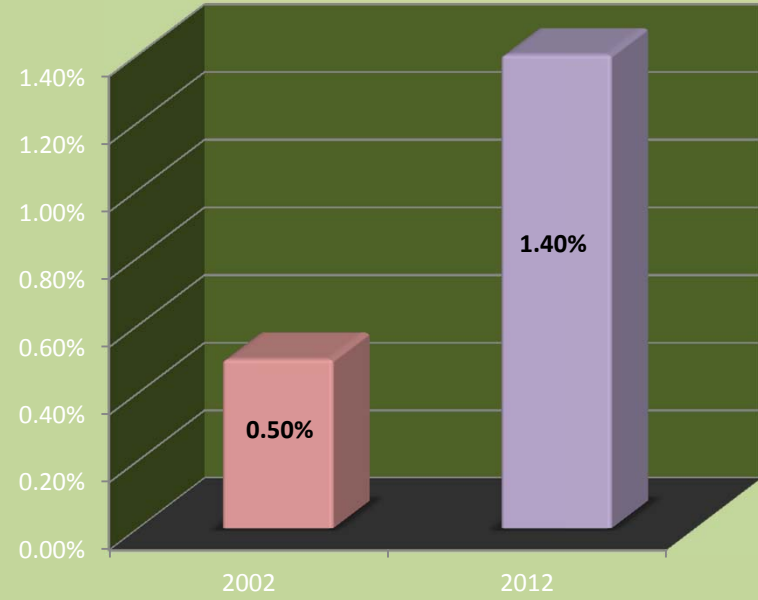


T.C.
AİLE VE
SOSYAL POLİTİKALAR
BAKANLIĞI

Social Expenditures by Years (Million TL)



The Rate of Social Expenditures to GDP

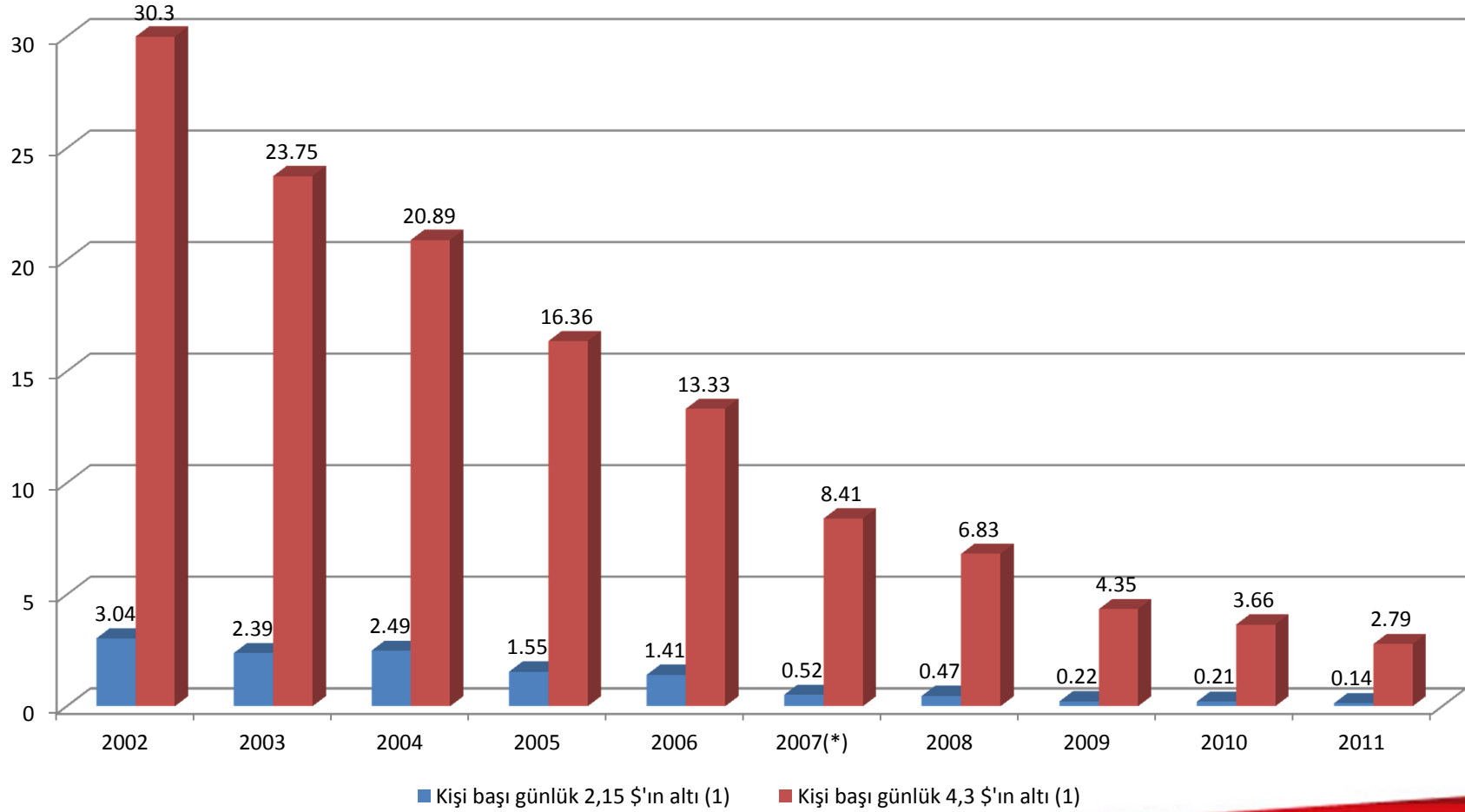




T.C.
AİLE VE
SOSYAL POLİTİKALAR
BAKANLIĞI

Poverty in Turkey

POVERTY THRESHOLD

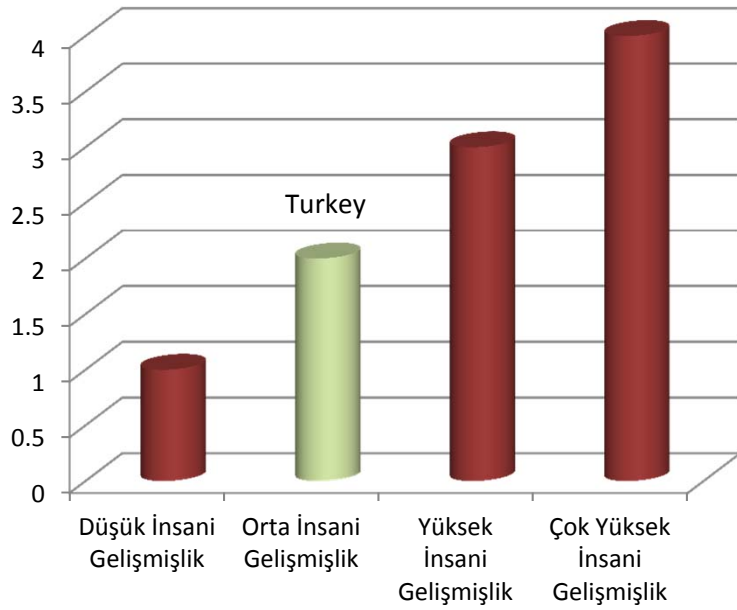




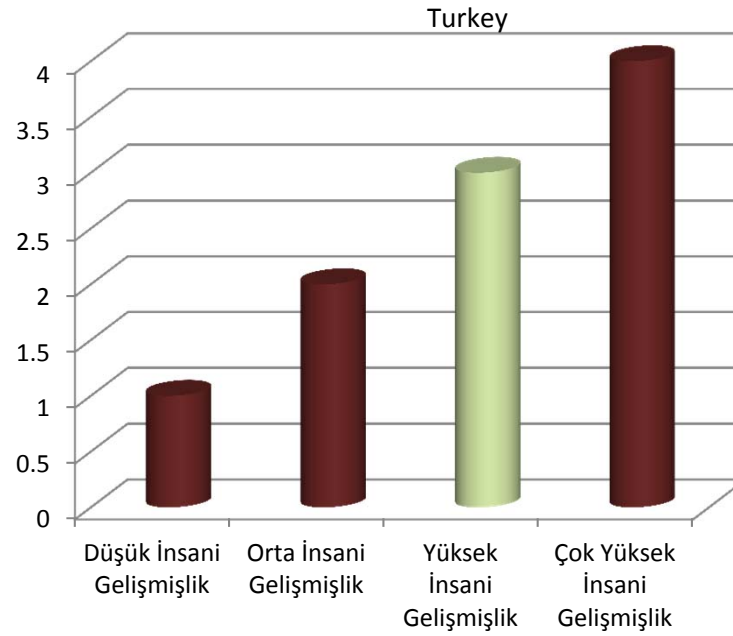
T.C.
AİLE VE
SOSYAL POLİTİKALAR
BAKANLIĞI

Human Development Index

2002



2010



FAMILY ASSISTANCES

- Food Assistances
- Sheltering Assistances
- Social Housing Project
- Heating Assistances
- Donation Program for Women Whose Husbands Are Dead
- Assistance Provided for the Needy Families of the Private

EDUCATION ASSISTANCES

- Educational Material Assistances
- **Conditional Education Assistances**
- Lunch Assistance
- Free Book
- Transportation, Sheltering and Food Assistance for the Students
- Bussing System for the Handicapped Students
- Building Dormitories

HEALTH ASSISTANCES

- Conditional Health Assistances (Health and Pregnancy) (CHA)
- Assistances for the Needs of the Handicapped

ASSISTANCES FOR SPECIFIC PURPOSES

- Public Soup-Kitchens
- Disaster Relief

ASSISTANCES IMPLEMENTED ACCORDING TO THE LAW NO.2022

- Allowances for the Elder Person
- Allowances for the Handicapped
- Allowances for the Handicapped's Relative (Under 18)
- Payment for Silicosis Patients

HOME-CARE ALLOWANCE

EDUCATION ASSISTANCES

Name of the Program	<ul style="list-style-type: none">• Conditional Education Assistances (CEA)
Content	<ul style="list-style-type: none">• It is provided for families who do not have social security, are poor and vulnerable, on the condition that they should send their children to school.
Applicant	<ul style="list-style-type: none">• Family member who is above the age of 18
Who Benefit	<ul style="list-style-type: none">• Families whose children are at the age of primary and high school
Document	<ul style="list-style-type: none">• RT. Identity Card
Amount	<ul style="list-style-type: none">• Primary school boy: 11 \$, girl: 18 \$ monthly• High school boy: 23\$, girl: 29 \$ monthly
Payment Period	<ul style="list-style-type: none">• 9 months (lump sum payment in every two months)

PROJECT SUPPORTS

- Income Generating Project Supports
- Social Support Project on the Rural Area
- Employability Training Projects
- Social Service Projects

PROJECT SUPPORTS

Name of the Program	<ul style="list-style-type: none">• Income Generating Projects
Content	<ul style="list-style-type: none">• It is the business establishment supports provided in order to enable poor households to establish and sustain their business to survive, earn their income and develop their business for a long term.
Applicant	<ul style="list-style-type: none">• Family member who is above the age of 18
Who Benefit	<ul style="list-style-type: none">• Whole family
Document	<ul style="list-style-type: none">• T.R. Identity Card• Projenin mahiyetine göre sertifika istenebilir
Amount	<ul style="list-style-type: none">• Up to 7800 \$ (changing according to the project) for individual projects• Utmost 26.000 \$ for sheep raising projects, 78.000 \$ for cattle breeding for group-based projects
Payment Period	<ul style="list-style-type: none">• It is paid following purchasing of the goods within the scope of the project

ESTABLISHING SOCIAL ASSISTANCE-EMPLOYMENT RELATION

In accordance with the decision of Economic Coordination Committee, citizens who receive social assistance or who apply for assistances have been automatically registered into Turkish Labour Institution (TLI) database via Social Assistance Information System (SAIS) and Integrated Social Assistance Services Information System since April 2011.



Between the period of April 2011-December 2012, **1 million 88 thousand** people were registered into the database.



RESULTS

- **22.000** people were employed,
- **61.000** people attended the course,
- **39.000** people were benefited from unemployment insurance.

SOCIAL ASSISTANCE INFORMATION SYSTEM (SAIS)

Social Assistance Information System (SAIS):

is **an e-governance application which has been put into practice** with a 6-months study by GDSA with the aim of;

- Assurance/determination of **neediness and personal information** of citizens, who apply for social assistances, from central databases,
- **Providing (online) data sharing between institutions** for preventing reiterated assistances.

**TR Identity No □ Search □ 14 Institutions □ 28 Different Data □
Report (in 10 seconds)**



It is was rewarded by the Turkish Presidency in 2010

INTEGRATED SOCIAL ASSISTANCE SERVICES (ISAS) INFORMATION SYSTEM

Project

- Integrated Social Assistance Services Information System is an information (informatics) system on which all activities are carried out in an electronic environment such as receiving applications from poor and needy citizens, creating household files, searching of personal information, socio-economic condition and wealth of citizens from central databases, keeping reports regarding social observations realized in the field about socio-economic condition of the household, determining the neediness of citizens, giving bank orders for assistance payments and automatic accounting regarding all assistances.

Aim

- To create a common database (**poverty inventory**) in the field of social assistances (6.4 million households)
- To transfer all procedures of GDSA and SASF into an electronic environment,
- To keep all social assistances provided by public institutions under a central database,
- To exchange data with NGOs and local administrations.

Current Situation

- Conditional Education and Health Assistances Module were completed (September 2010).
- Assistances and Resource Management Module were completed (October 2011).
- General Health Insurance Module was completed (January 2012).
- Module of Cash Donation Program for Women Whose Husbands Are Dead was completed (April 2012).
- Module of Human Resources of Foundation was completed (April 2012).
- Module of 2022 was completed (November 2012).

Planned Activities

- Module regarding GDSA project supports will be completed.
- Analysis and coding study regarding the Home-care Allowance Module are continuing.
- Scoring formula will be integrated into ISAS Information System
- Studies in order to obtain information about bank accounts and credit card expenditures will be realized.
- By establishing a Social Assistance Portal, local administrations and NGOs will be included into the system.



VISION OF 2023

- The rate of social expenditures to GDP will be raised to 3%.
- Poverty (food and non-food) will be permanently diminished to below 10%.
- A social support system will be established in which social supports and social services are provided integrately as «right-based».
- The condition of the family will be taken as a basis in social supports.
- The amount of social support will be enough to relieve the poor family of poverty.
- If people who are registered employee become poor, they will be supported with social assistances.
- The Integrated Social Assistance Services Project will be completed.
- The Scoring Formula Project will be completed.
- 100.000 Social Houses will be built for the poor.
- There will be no people who have to live with a 4.3 dollar income.

Recommendations:

What you need to be successful in poverty alleviation?

1. Strong political/administrative coordination
2. human resources: to **employ expert and qualified** personnel
3. Information technology: to create an integrated **information system** in poverty alleviation, providing data from related ministries.
4. Impact analysis and program **evaluation**
5. **Improve quality and quantity** of social transfers: use public money more effectively and smartly.



REPUBLIC OF TURKEY,
MINISTRY OF FAMILY AND
SOCIAL POLICIES

THANK YOU

Orhan.bilge@aile.gov.tr
Phone: +90 (312) 705 52 00