



INTERNATIONAL
FOOD POLICY
RESEARCH
INSTITUTE

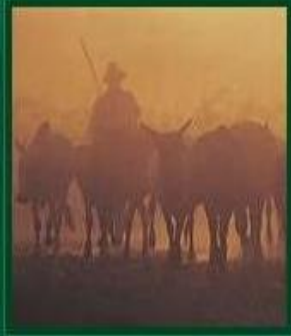
Food and nutrition security is central for economic development in OIC member countries

Presenter:

Clemens Breisinger

This presentation:

- A food and nutrition security typology for IOC member countries
- Policies for improving food security at national and household levels
- Nutrition policies and interventions for IOC countries
- Data and M&E systems



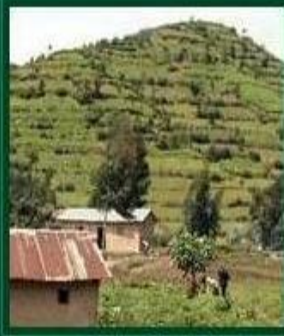
Food security, farming, and climate change to 2050

Addressing poverty is key to climate change adaptation



Reflections on the Global Food Crisis

How did it happen? How has it hurt? And how can we prevent the next one?



Investment for Poverty Reduction in Rwanda

Agricultural development strategies to promote inclusive growth



IFPRI

INTERNATIONAL FOOD POLICY RESEARCH INSTITUTE

IFPRI's mission is find sustainable solutions for ending hunger and poverty

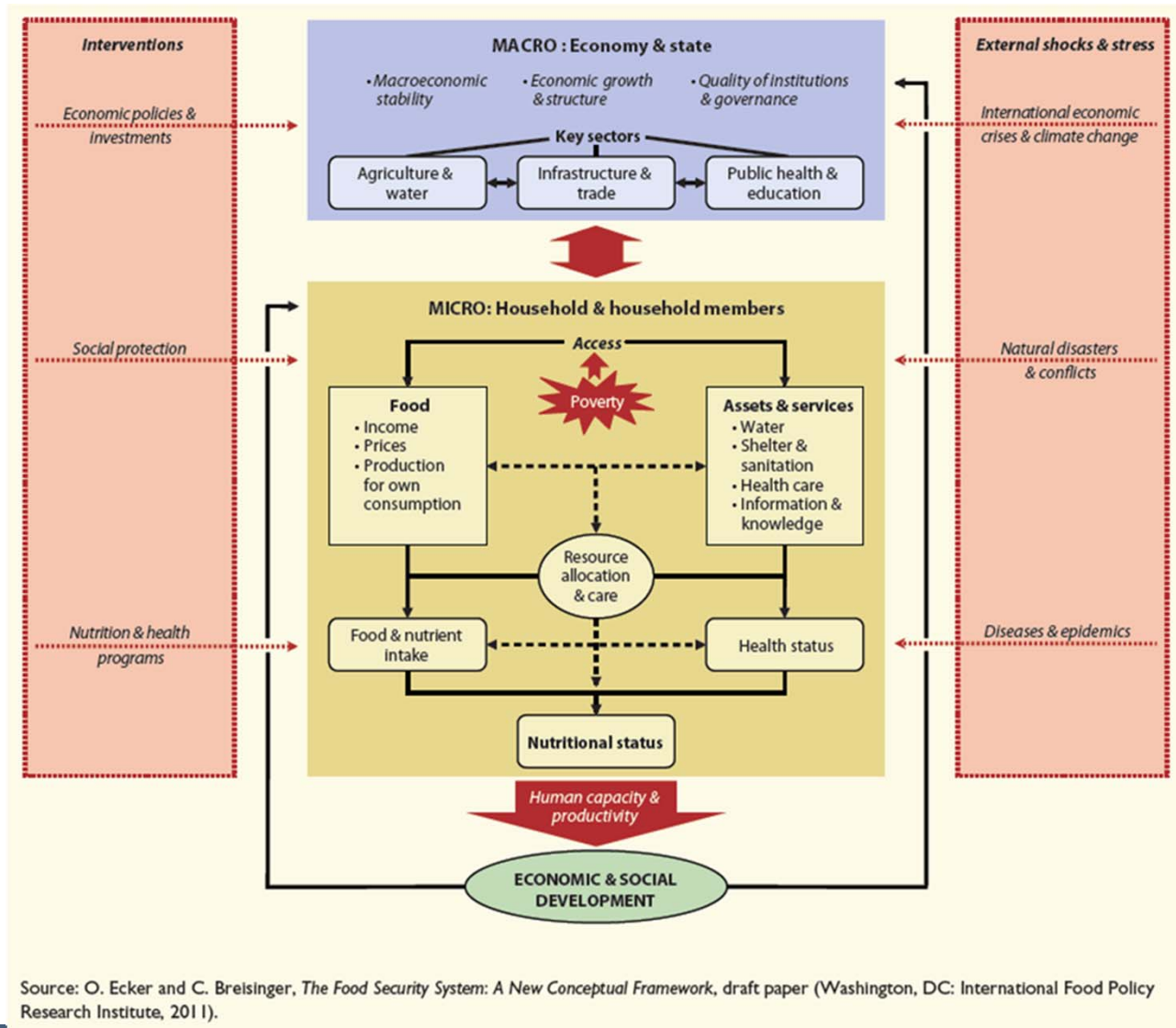
IFPRI's comparative advantages:

- Reputation for **high-quality, relevant food policy research, capacity strengthening and communication**
- Excellence in **interdisciplinary research, policy modeling, and impact evaluation**
- Strong **regional and country presence**
- **Expert staff**

IFPRI has 500+ staff in 14 countries
www.ifpri.org



Food security has a national and household-level dimension



Food security matrix for OIC member countries

		LOW	National food security	HIGH
		Low or moderate	Serious	Alarming or extremely alarming
LOW	Low or moderate	Bahrain, Iran, Kazakhstan, Kuwait, Libya, Malaysia, Oman, Qatar, Saudi Arabia, Tunisia, Turkey, Turkmenistan, Uzbekistan	Algeria, Morocco	Jordan, Kyrgyz, Lebanon, Senegal, Suriname, West Bank and Gaza
Household food security	Serious	Azerbaijan, Gabon	Syria	Albania, Gambia, Maldives, Mauritania, Togo
HIGH	Alarming or extremely alarming	Chad, Indonesia, Nigeria, Pakistan	Bangladesh, Cameroon, Côte d'Ivoire, Egypt, Sudan	Afghanistan, Benin, Burkina Faso, Comoros, Djibouti, Guinea, Guinea-Bissau, Mali, Mozambique, Niger, Sierra Leone, Tajikistan, Uganda, Yemen

National/regional level policies

Production-based approach

- Investments in agriculture
- Investments in rural infrastructure
- Investments in agricultural R&D



Trade-based approach

- Export-led economic growth can generate foreign exchange
- Well managed grain reserves help increasing the resilience
- Hedging and diversified import portfolios safeguard against shocks

Household/nutrition-level policies

Social services



Social safety nets

- Health
- Education
- Water and sanitation

- Targeted programs are generally preferable to general subsidies
- Conditional cash transfers

Nutrition: global lessons for IOC countries

- 5 out of 10 top development solutions are directly related to nutrition (Copenhagen consensus)
- Nutrition interventions have very favorable cost-benefit ratios (1:6 – 1:17)

Box 1: Cost-benefit ratios of large-scale nutrition interventions (aggregates)

Micronutrient supplementation	17.3
Micronutrient fortification	9.5
Biofortification (plant breeding)	16.7
Deworming preschoolers	6.0
Community-based nutrition promotion	12.5

Source: Horton et al. (2008).

Nutrition: Lessons from Brazil

Brazil managed to half malnutrition within 10 years

- Presidential initiative
- National strategy coordinates programs from 11 ministries
- Food and nutrition security secretariat and social protection secretariat
- Right to food in the constitution
- Monitoring and evaluation of food security interventions

Improved data and M&E systems help making policies, investments and programs more effective

FOOD SECURITY PORTAL

Monitoring world market prices

AGRICULTURAL ANNOTATED COMMODITY PRICES

Wheat Prices | Wheat News | Wheat Price Comparisons | About



H. GG Global wheat supplies are forecast slightly

Annotated Price Timeline Policy Analysis Tool T...



AGRICULTURAL COMMODITY PRICES AND RETURNS

World Wheat Prices, 1998-Present



Policy Analysis Tools

Policy Analysis Tools

Wheat Prices | **Wheat News** | Wheat Price Comparisons | About | Sources

Wheat prices- SOFT


Weekly price of US No.2, Soft Red Winter Wheat, US Gulf of Mexico (Tuesday).
[Source: FAO \(Raw Data\)](#) Show

Series: US Dollars per Ton % Change



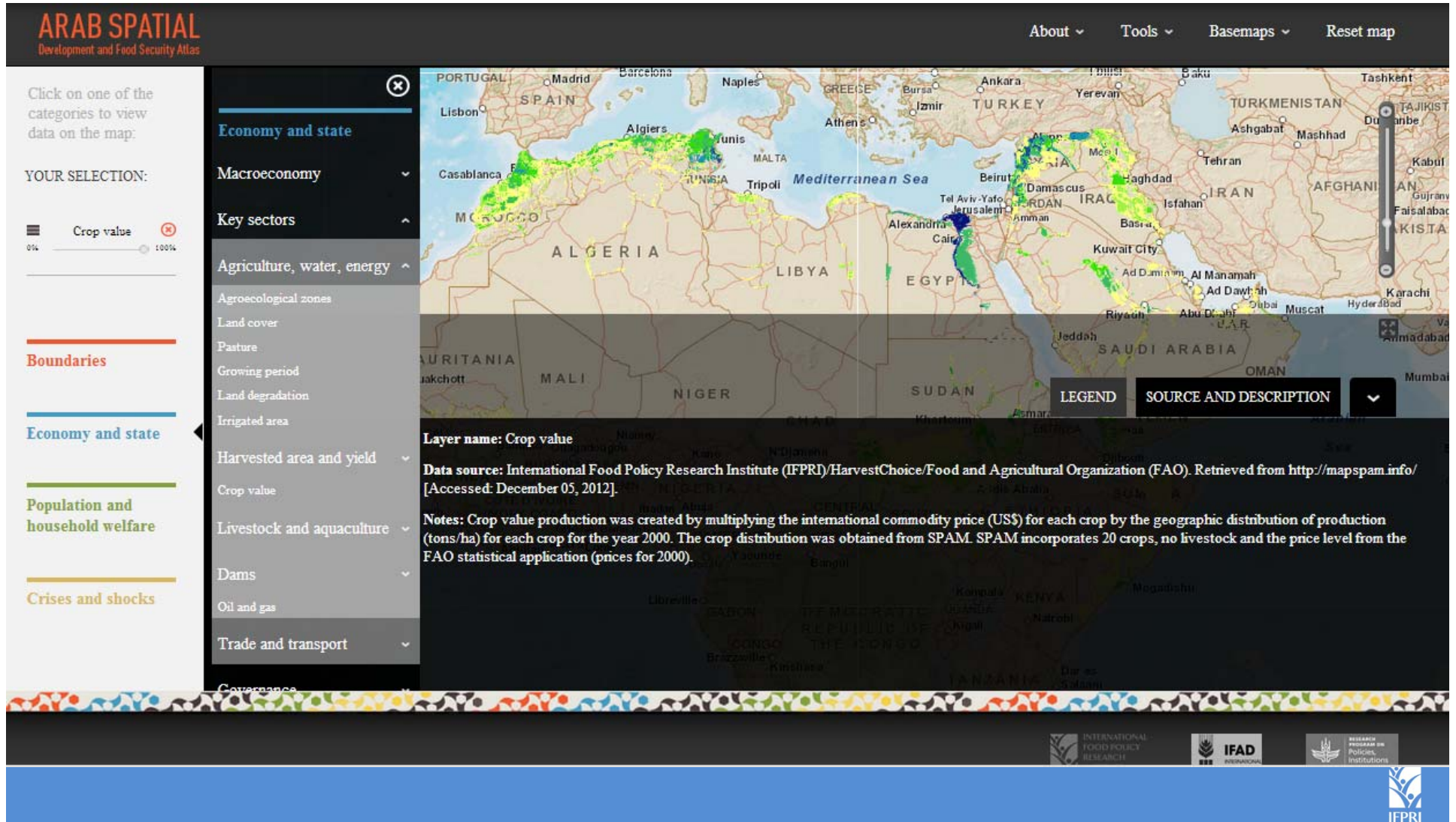
Policy Analysis Tools

- AGRICULTURAL COMMODITY MARKETS +
- AGRICULTURAL COMMODITY PRICES AND RETURNS +
- AGRICULTURAL INPUT PRICES +
- CAPACITY STRENGTHENING +
- EXCESSIVE FOOD PRICE VARIABILITY EARLY WARNING SYSTEM
- FOOD CRISIS REPORTS +
- FOOD SECURITY MEDIA ANALYSIS (FOMA)
- AGRICULTURAL POLICY TOOLS +
- CAPACITY STRENGTHENING -

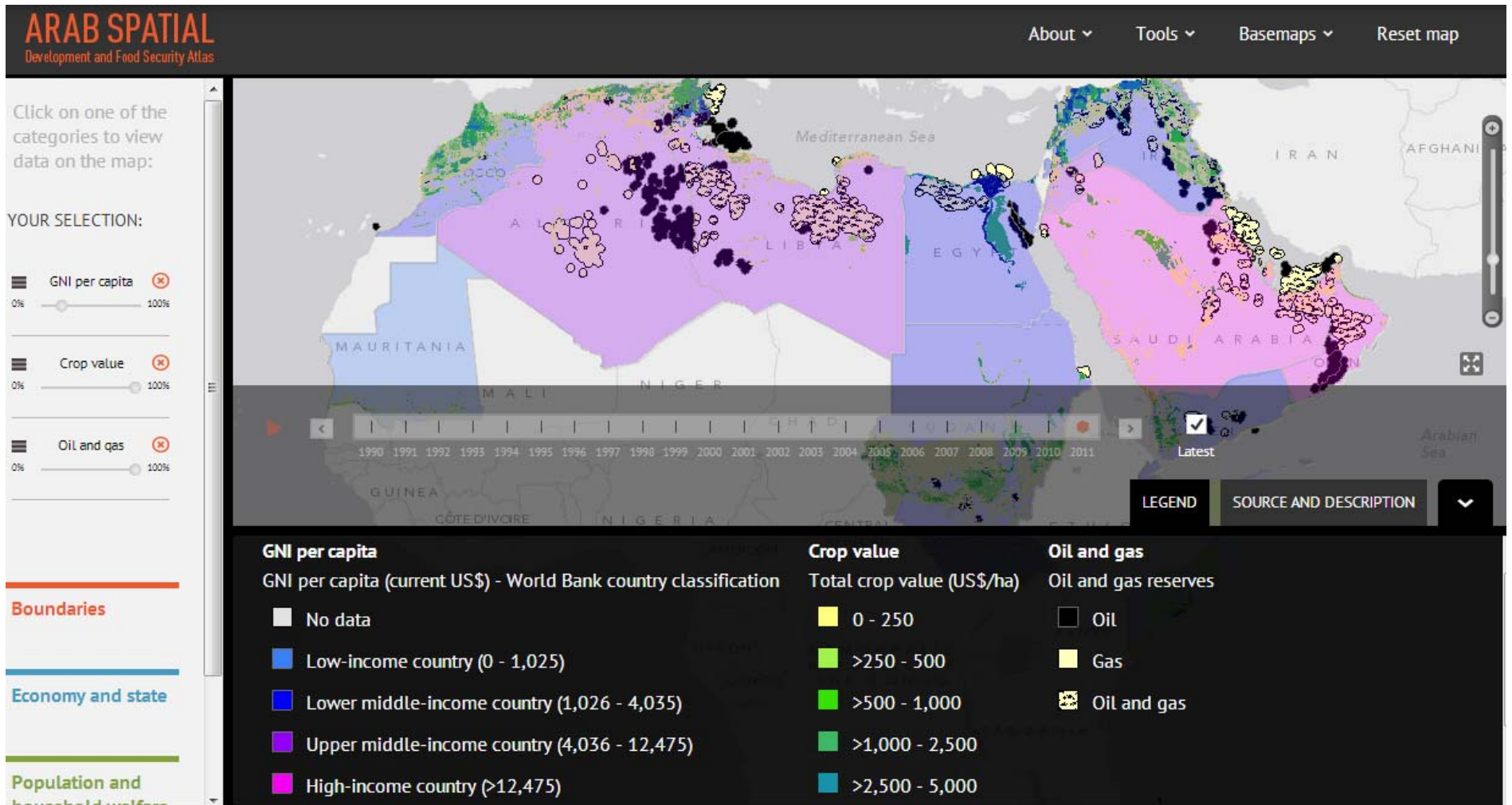
 Contact the **POLICY HELPLINE**

INNOVATION IN FOOD SECURITY KNOWLEDGE SYSTEMS

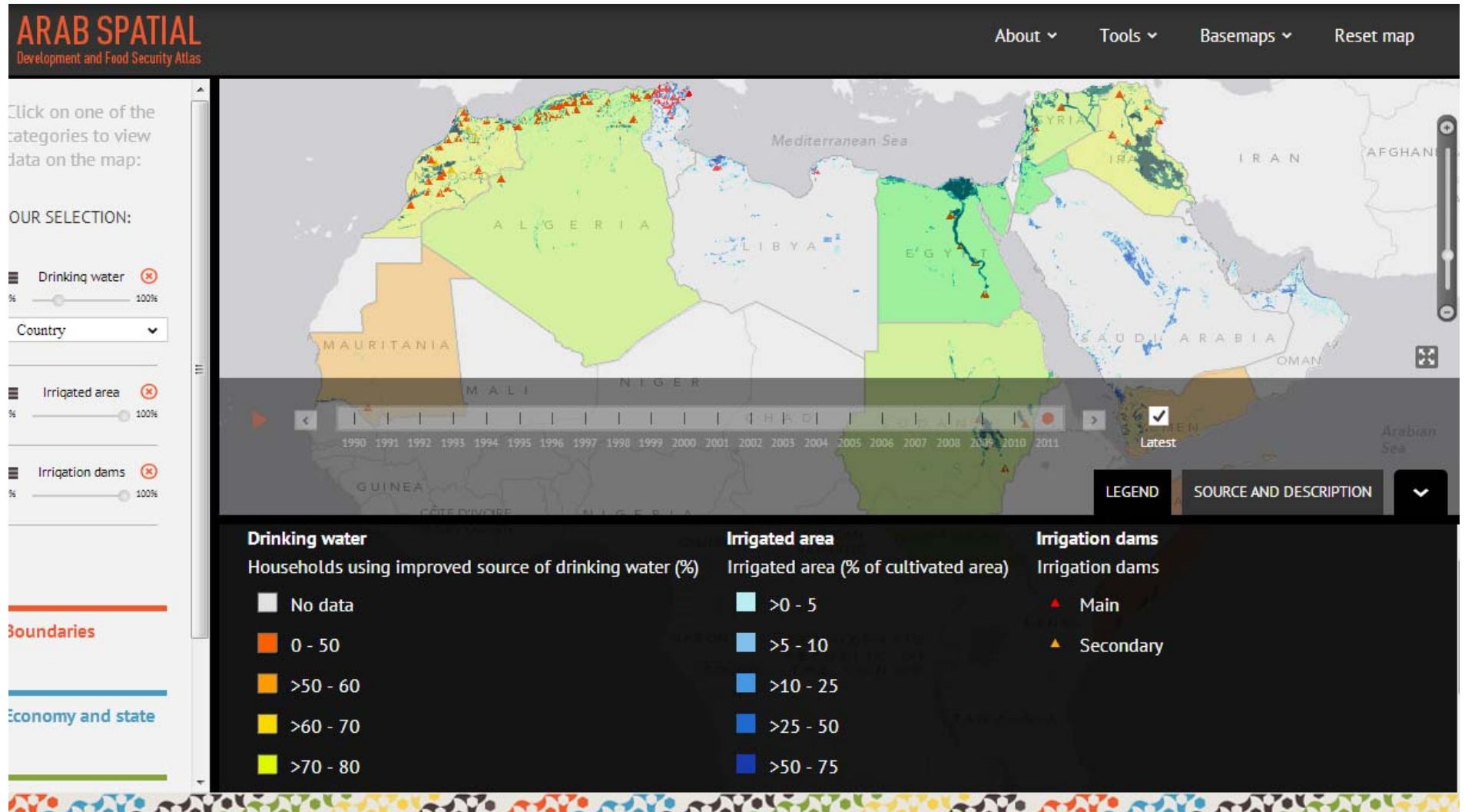
www.arabspatial.org



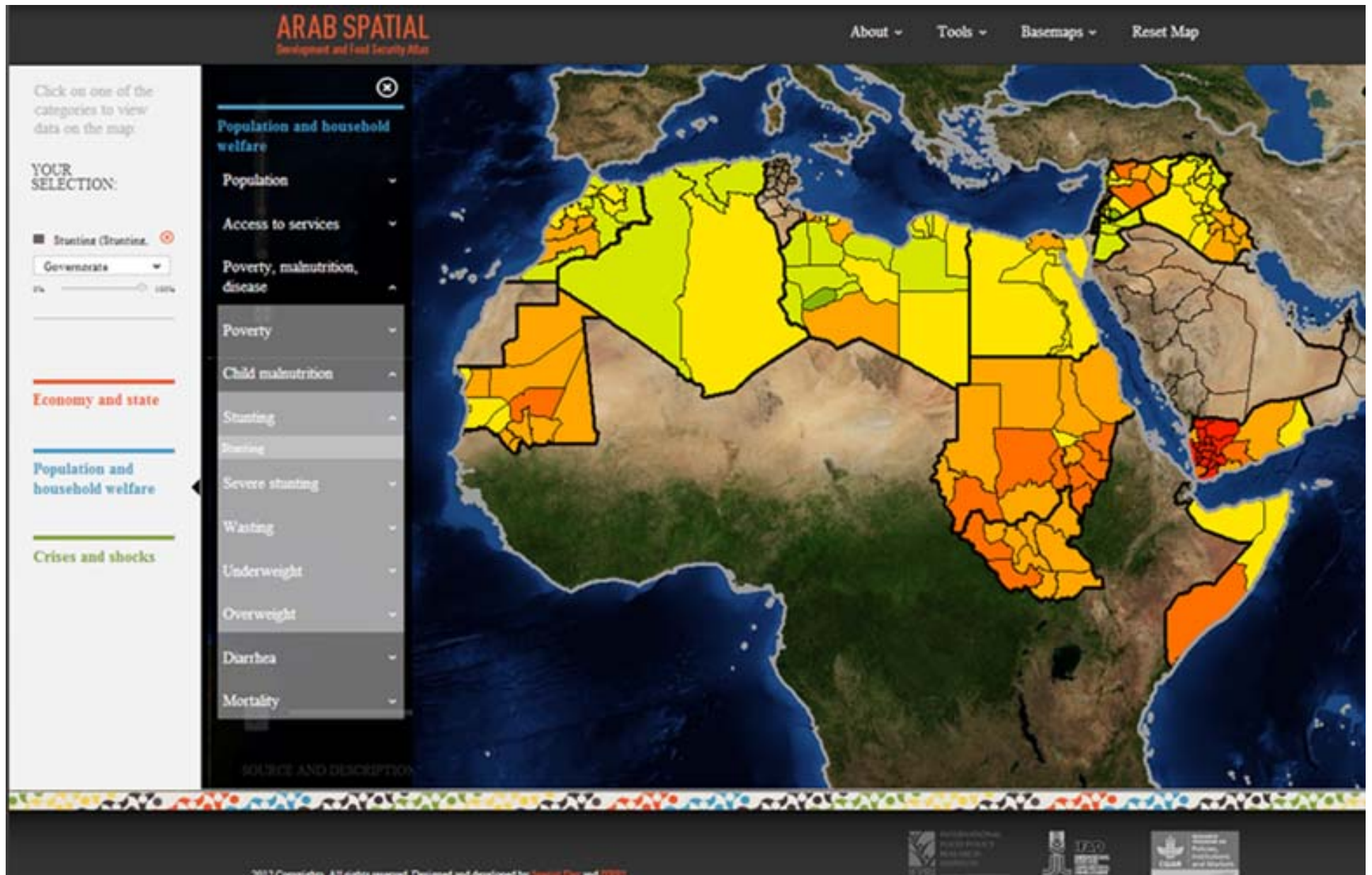
Oil-food-income linkages



Irrigation and drinking water



Child malnutrition at the sub-national level

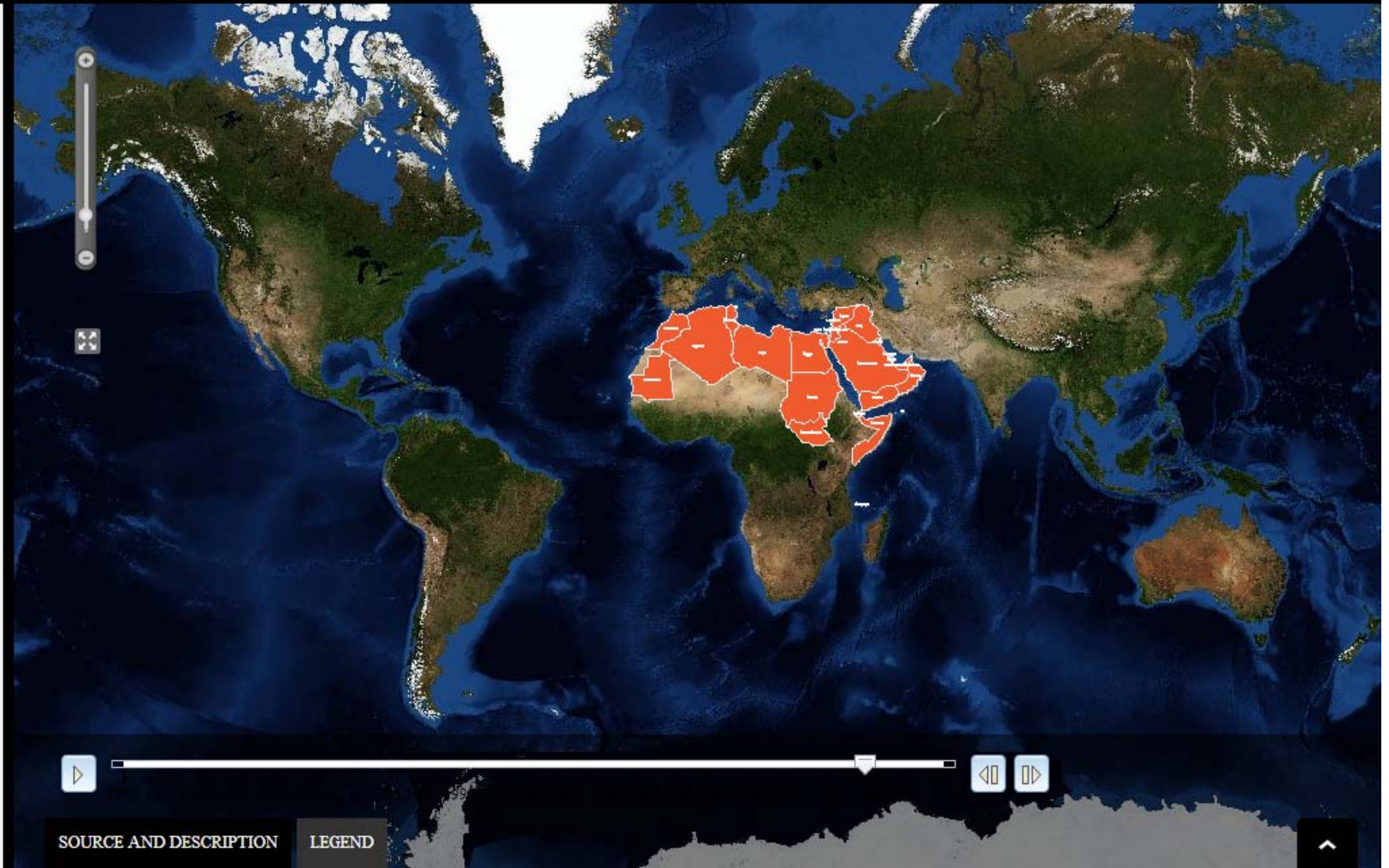


Click on one of the categories to view data on the map:

Economy and state


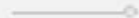
Population and household welfare

Crises and shocks



Click on one of the categories to view data on the map:

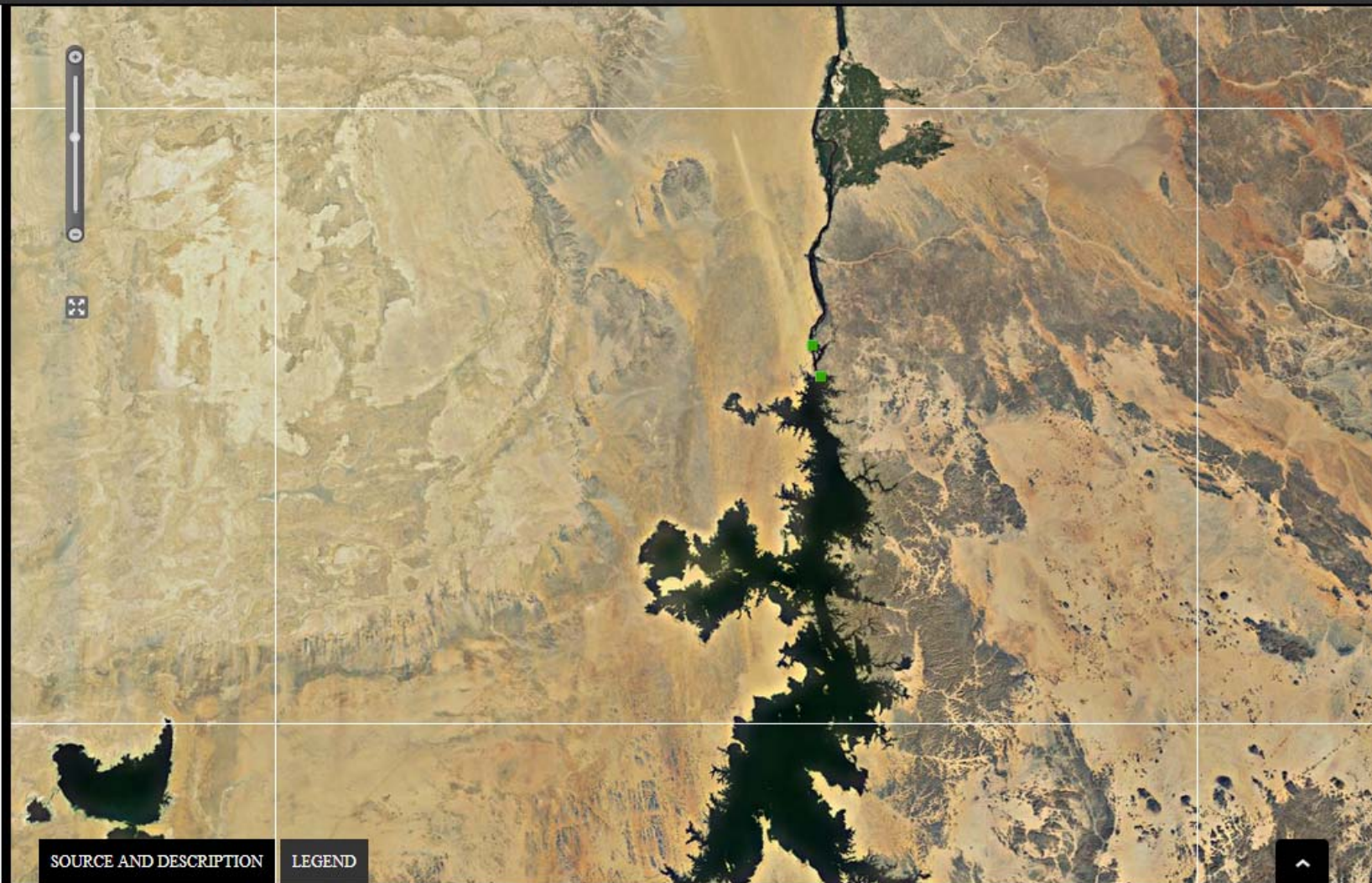
YOUR SELECTION:

Dams (Hydropower) 
0%  100%

Economy and state

Population and household welfare

Crises and shocks



SOURCE AND DESCRIPTION

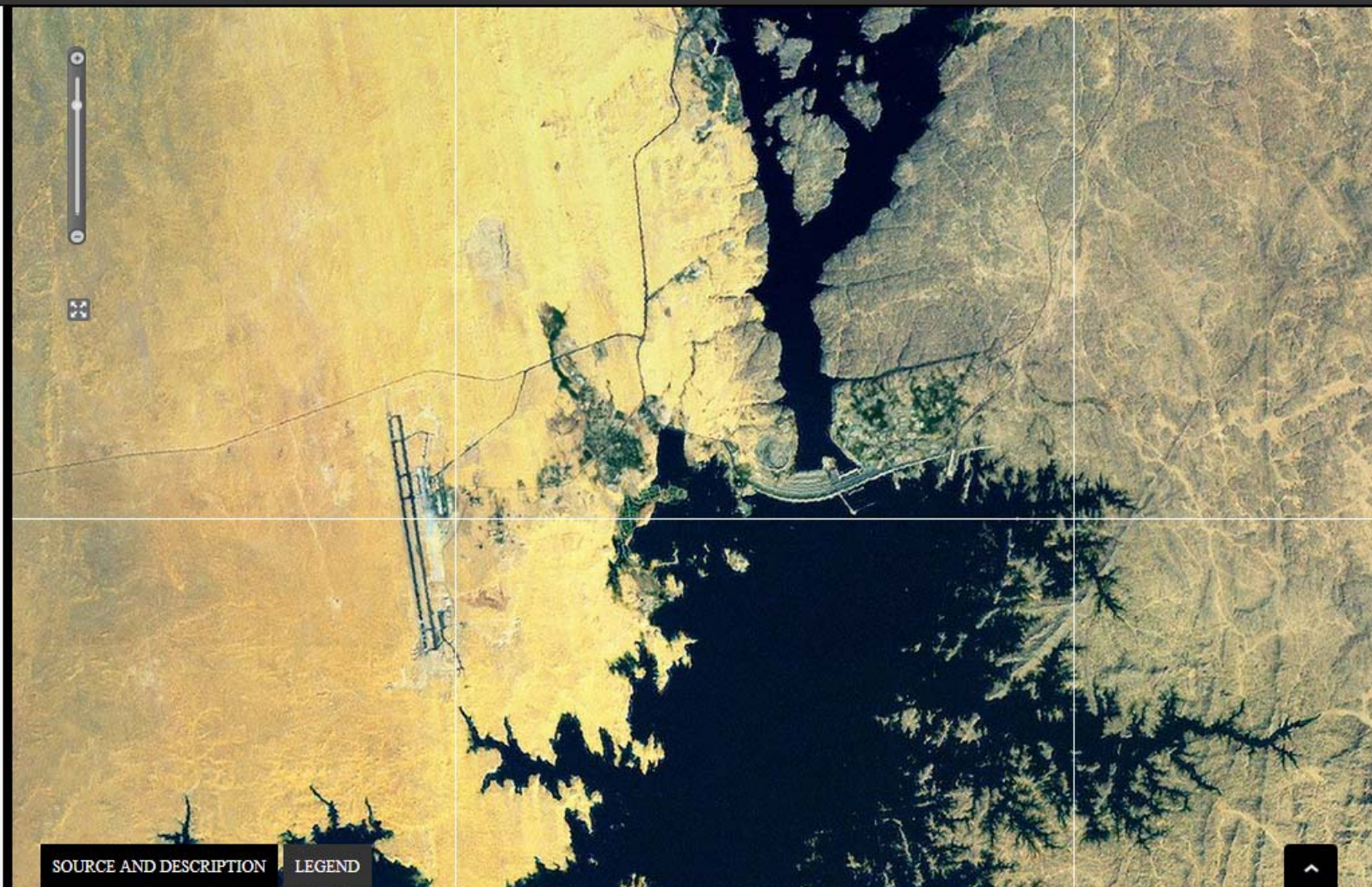
LEGEND

Click on one of the categories to view data on the map:

Economy and state

Population and household welfare

Crises and shocks



SOURCE AND DESCRIPTION

LEGEND

Click on one of the categories to view data on the map:

Economy and state

Population and household welfare

Crises and shocks



SOURCE AND DESCRIPTION

LEGEND

Click on one of the categories to view data on the map:

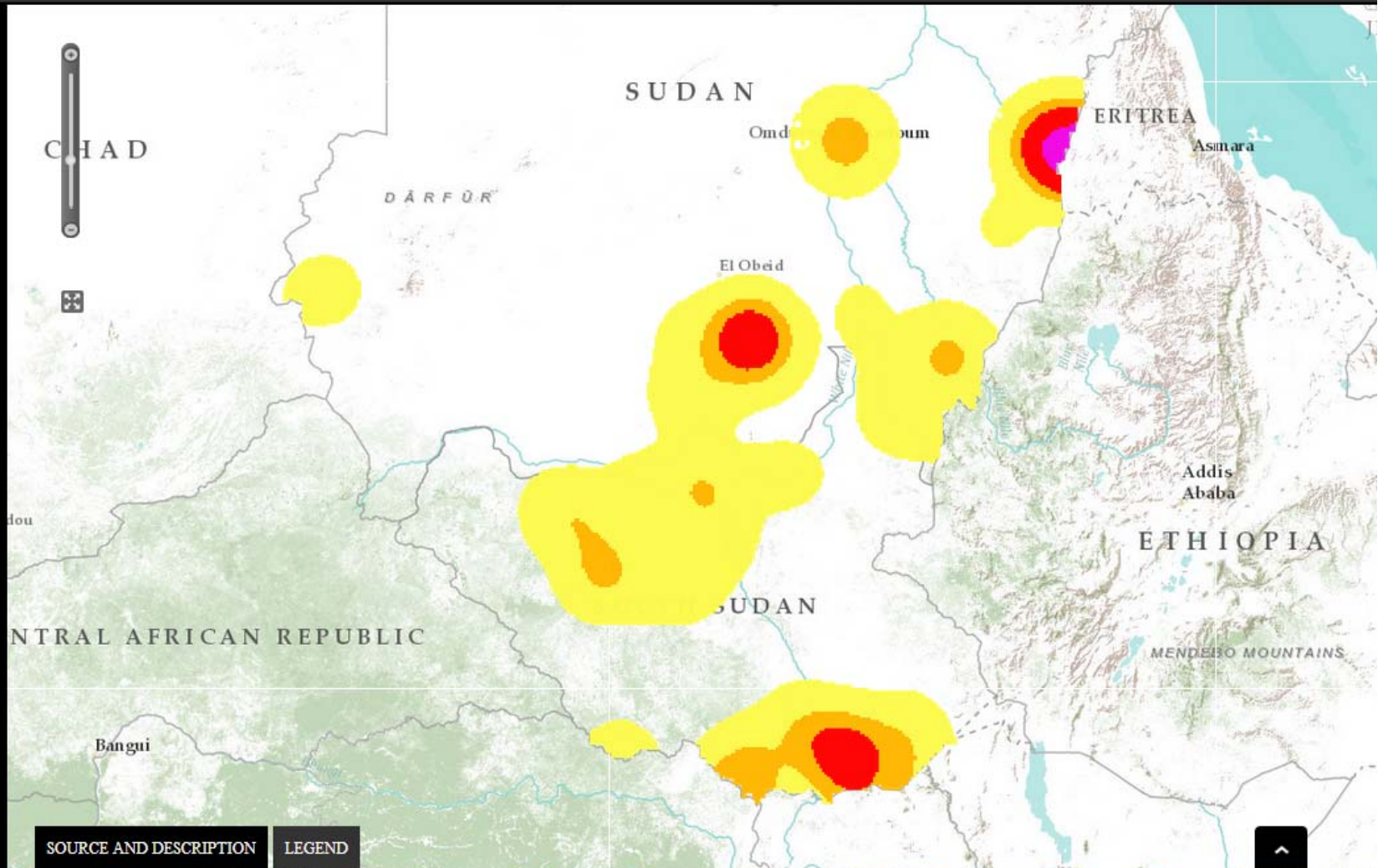
YOUR SELECTION:

Conflicts (Conflicts, 0% 100%

Economy and state

Population and household welfare

Crises and shocks



SOURCE AND DESCRIPTION LEGEND

Click on one of the categories to view data on the map:

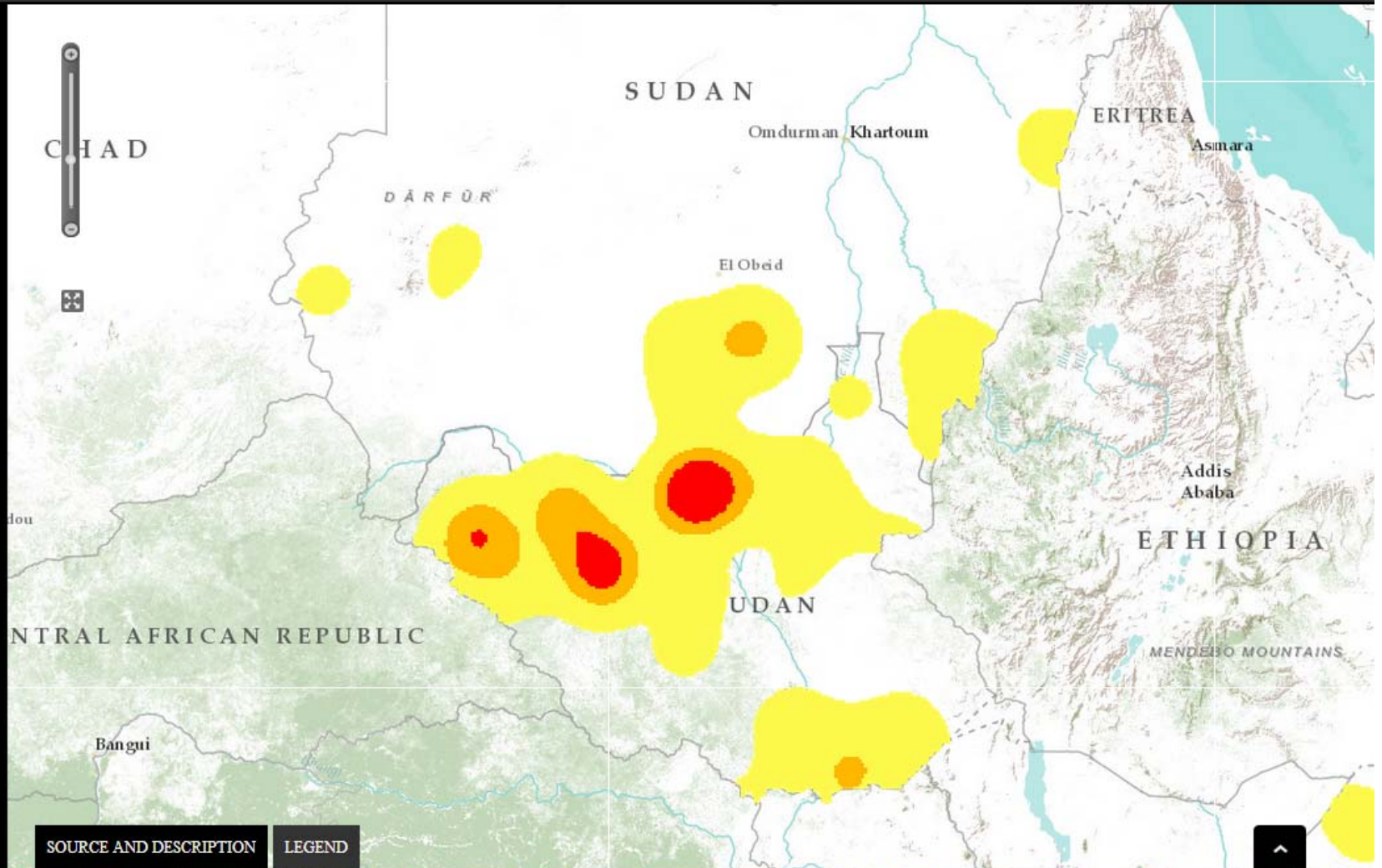
YOUR SELECTION:

Conflicts (Conflicts. 0% 100%

Economy and state

Population and household welfare

Crises and shocks



SOURCE AND DESCRIPTION LEGEND

Click on one of the categories to view data on the map:

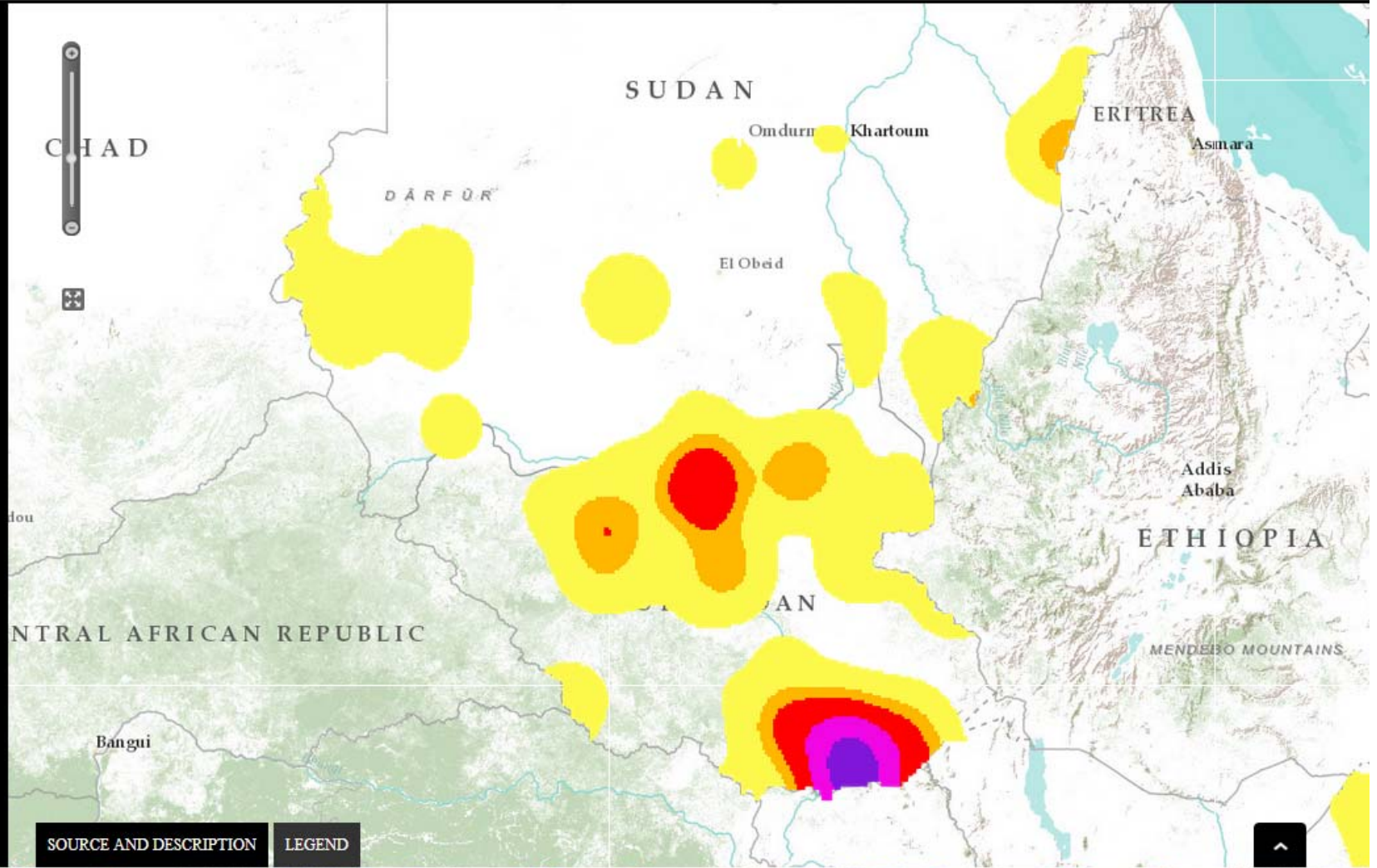
YOUR SELECTION:

Conflicts (Conflicts) 0% 100%

Economy and state

Population and household welfare

Crises and shocks



Click on one of the categories to view data on the map:

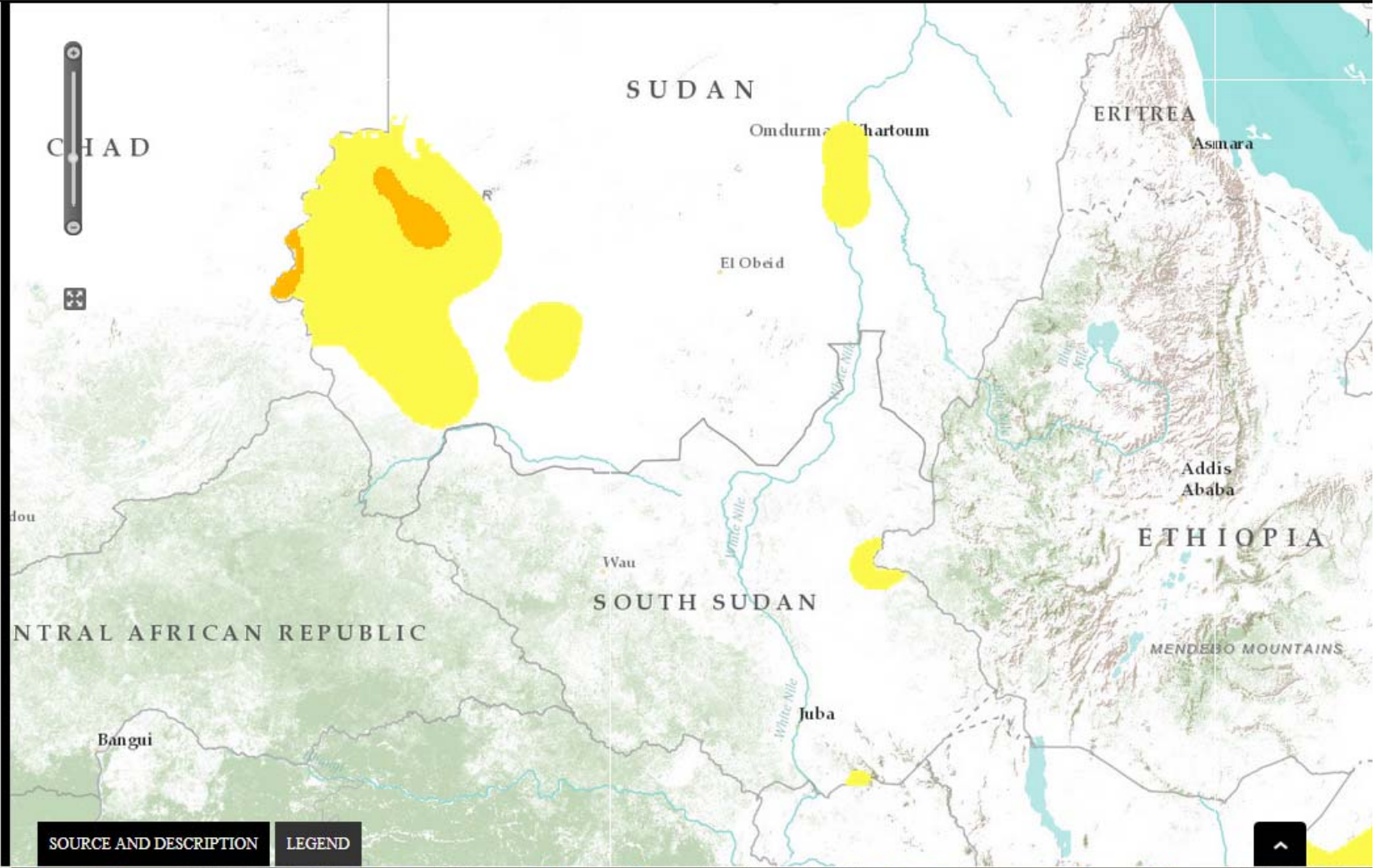
YOUR SELECTION:

Conflicts (Conflicts. 0% 100%

Economy and state

Population and household welfare

Crises and shocks


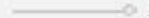


SOURCE AND DESCRIPTION

LEGEND

Click on one of the categories to view data on the map:

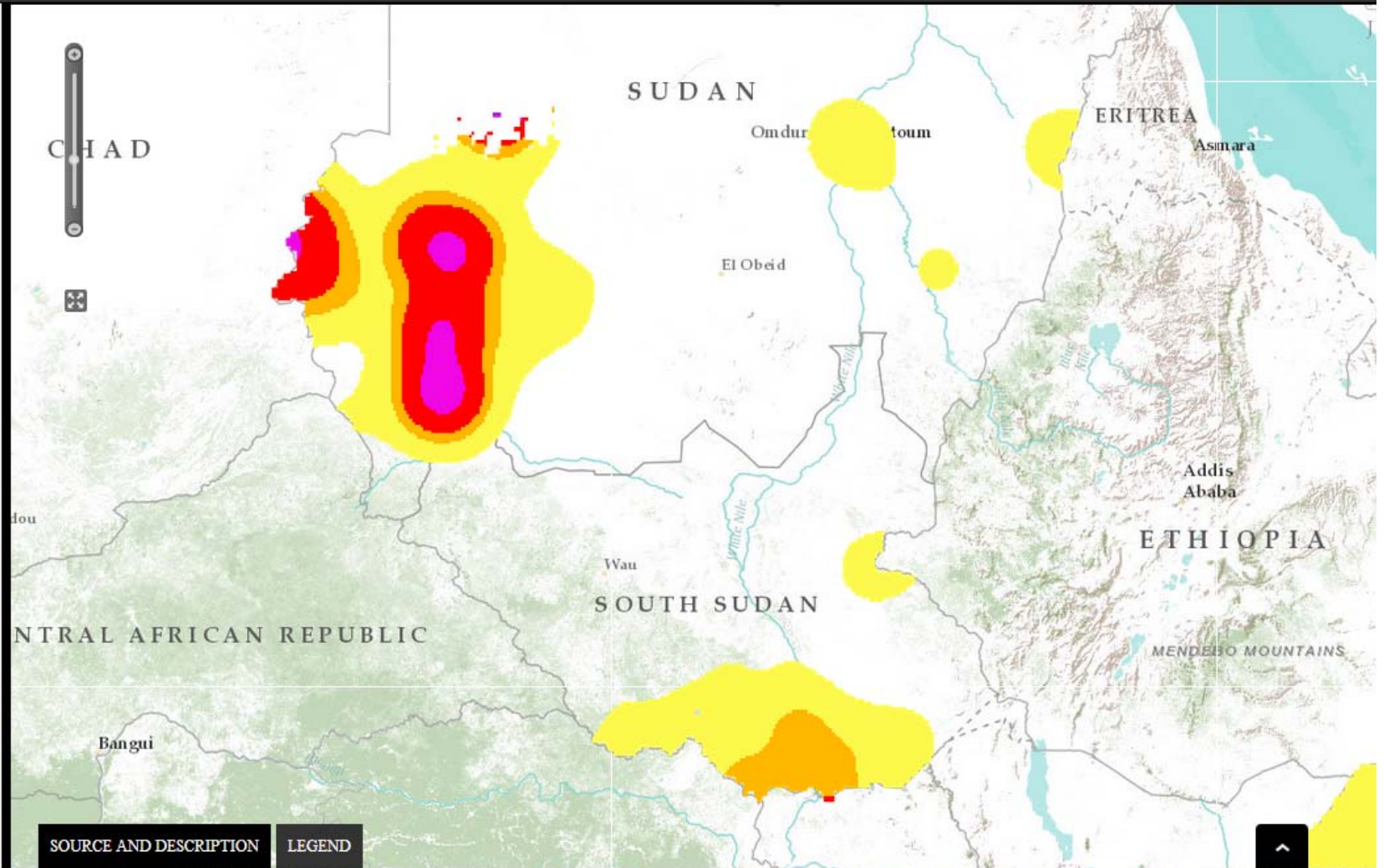
YOUR SELECTION:

Conflicts (Conflicts. )
0%  100%

Economy and state

Population and household welfare

Crises and shocks



SOURCE AND DESCRIPTION LEGEND

Click on one of the categories to view data on the map:

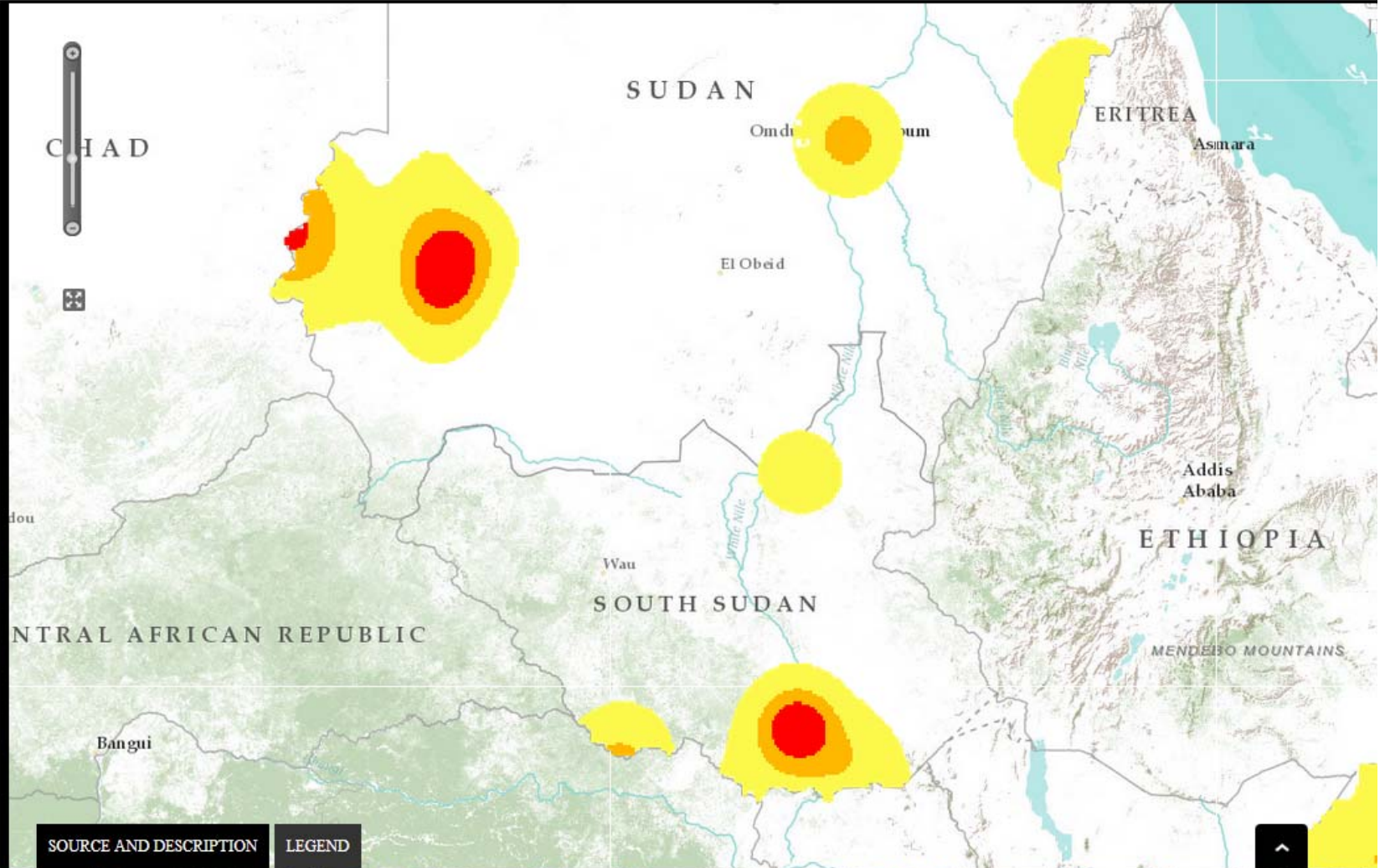
YOUR SELECTION:

Conflicts (Conflicts. 0% 100%)

Economy and state

Population and household welfare

Crises and shocks



SOURCE AND DESCRIPTION LEGEND

Click on one of the categories to view data on the map:

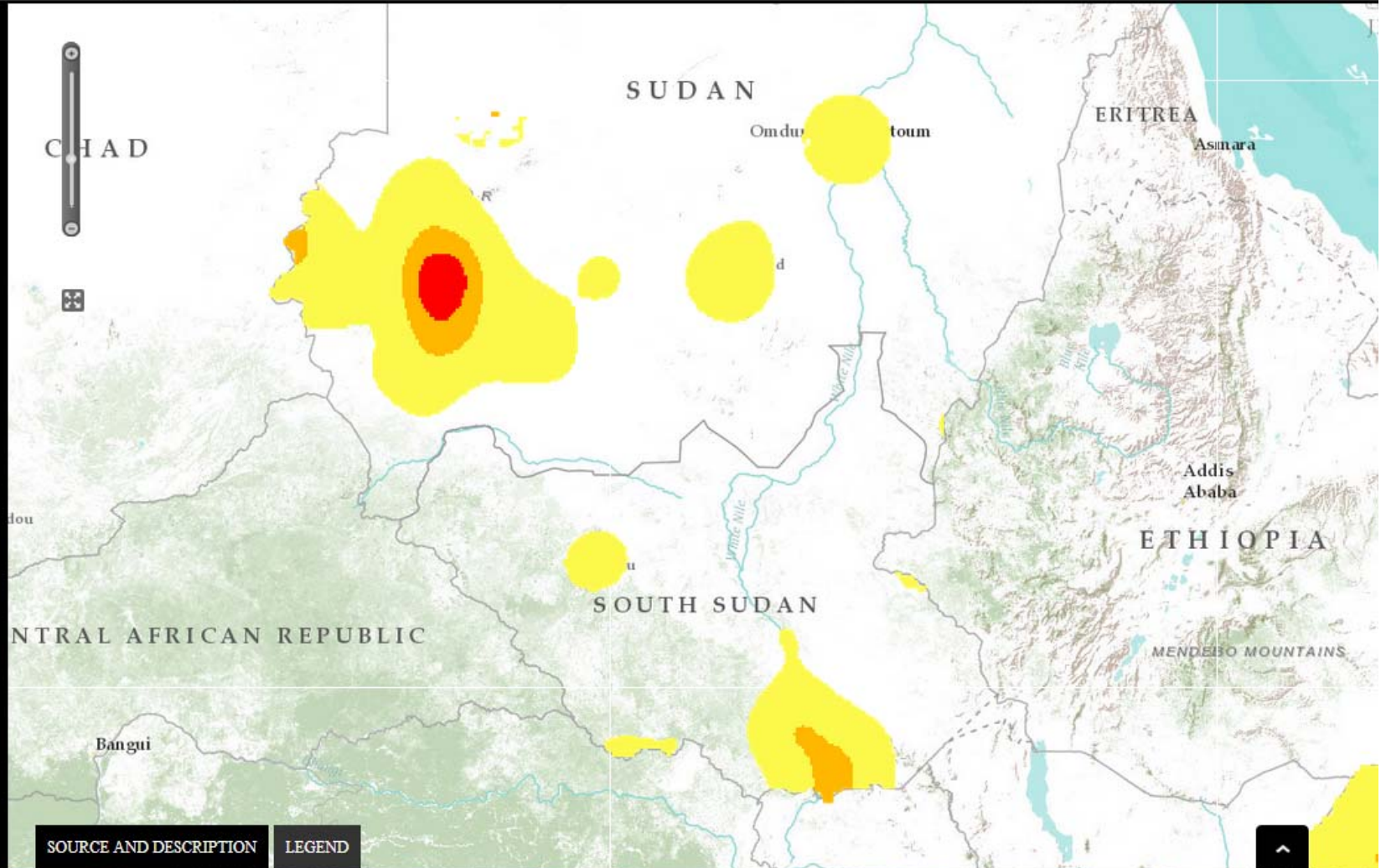
YOUR SELECTION:

Conflicts (Conflicts. 0%)

Economy and state

Population and household welfare

Crises and shocks



SOURCE AND DESCRIPTION

LEGEND

Click on one of the categories to view data on the map:

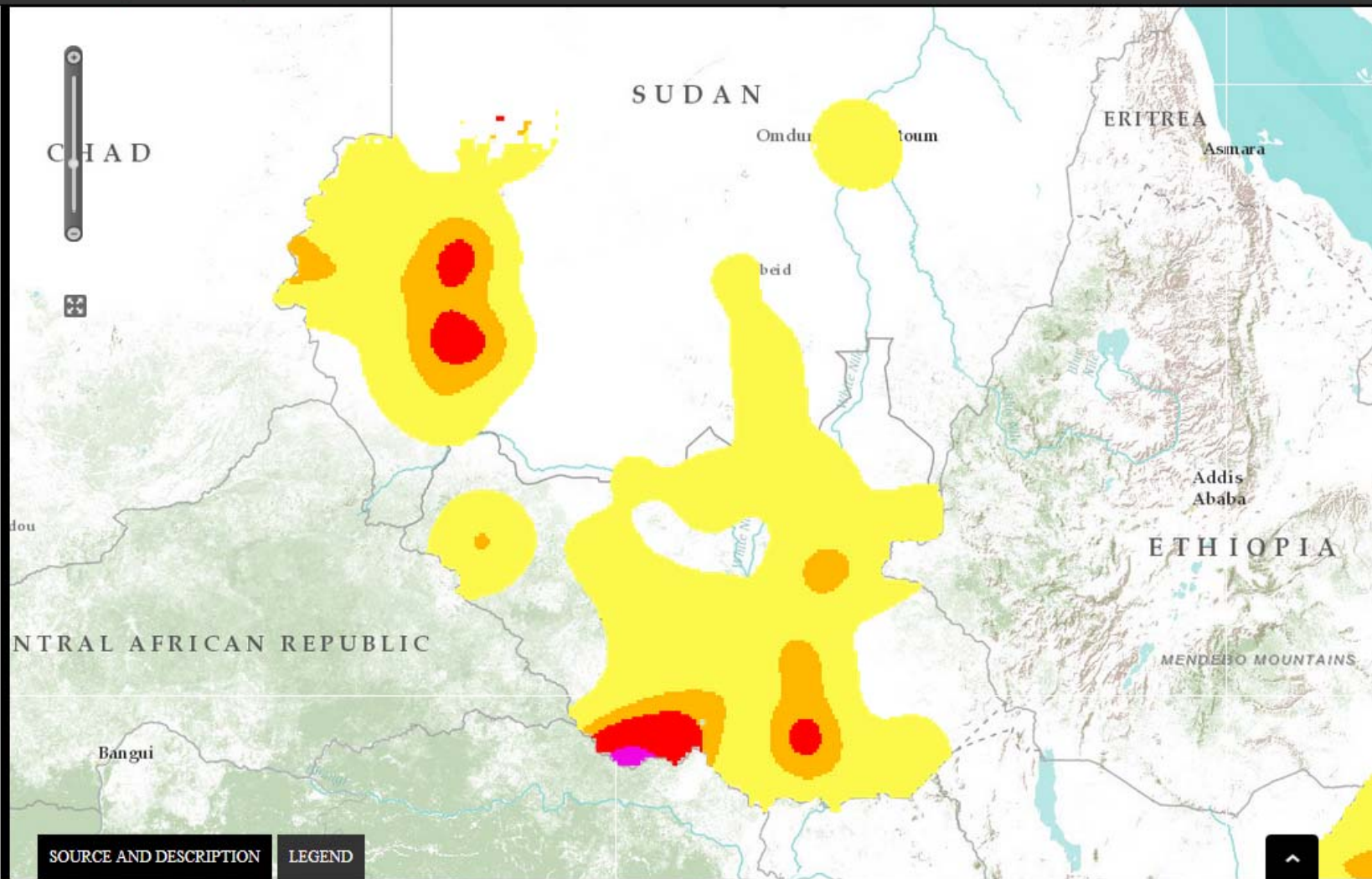
YOUR SELECTION:

Conflicts (Conflicts, 0%)

Economy and state

Population and household welfare



Crises and shocks



SOURCE AND DESCRIPTION LEGEND

Click on one of the categories to view data on the map:

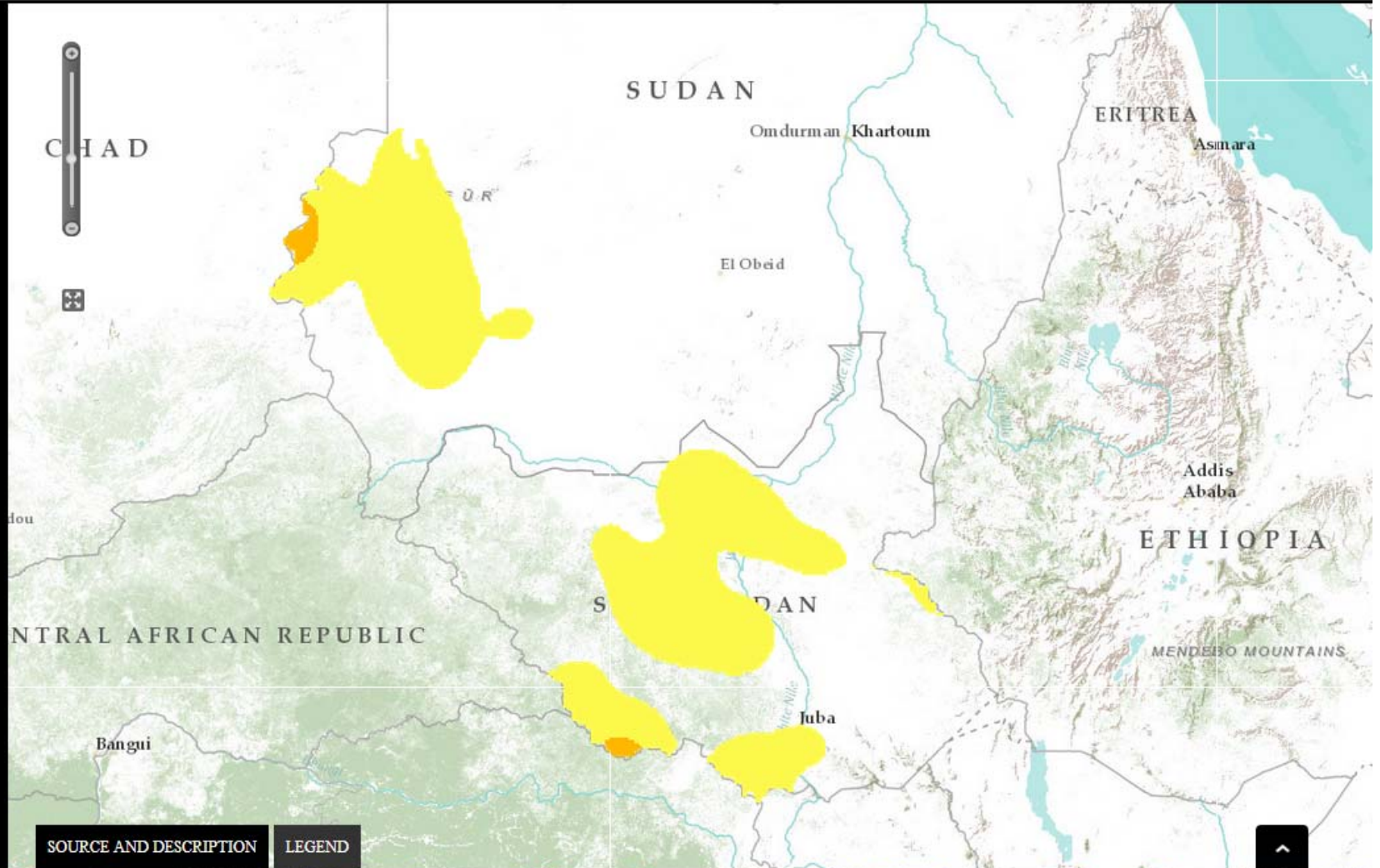
YOUR SELECTION:

Conflicts (Conflicts. 
0%  100%

Economy and state

Population and household welfare

Crises and shocks



SOURCE AND DESCRIPTION

LEGEND

Summary

- Depending on the country, policies should focus more on trade/agriculture and/or social protection/nutrition
- A food security typology for OIC member countries can help designing policies and allocating resources
- Nutrition intervention have very high cost benefit ratios
- Taking effective action requires improving access to data and effective M&E systems